

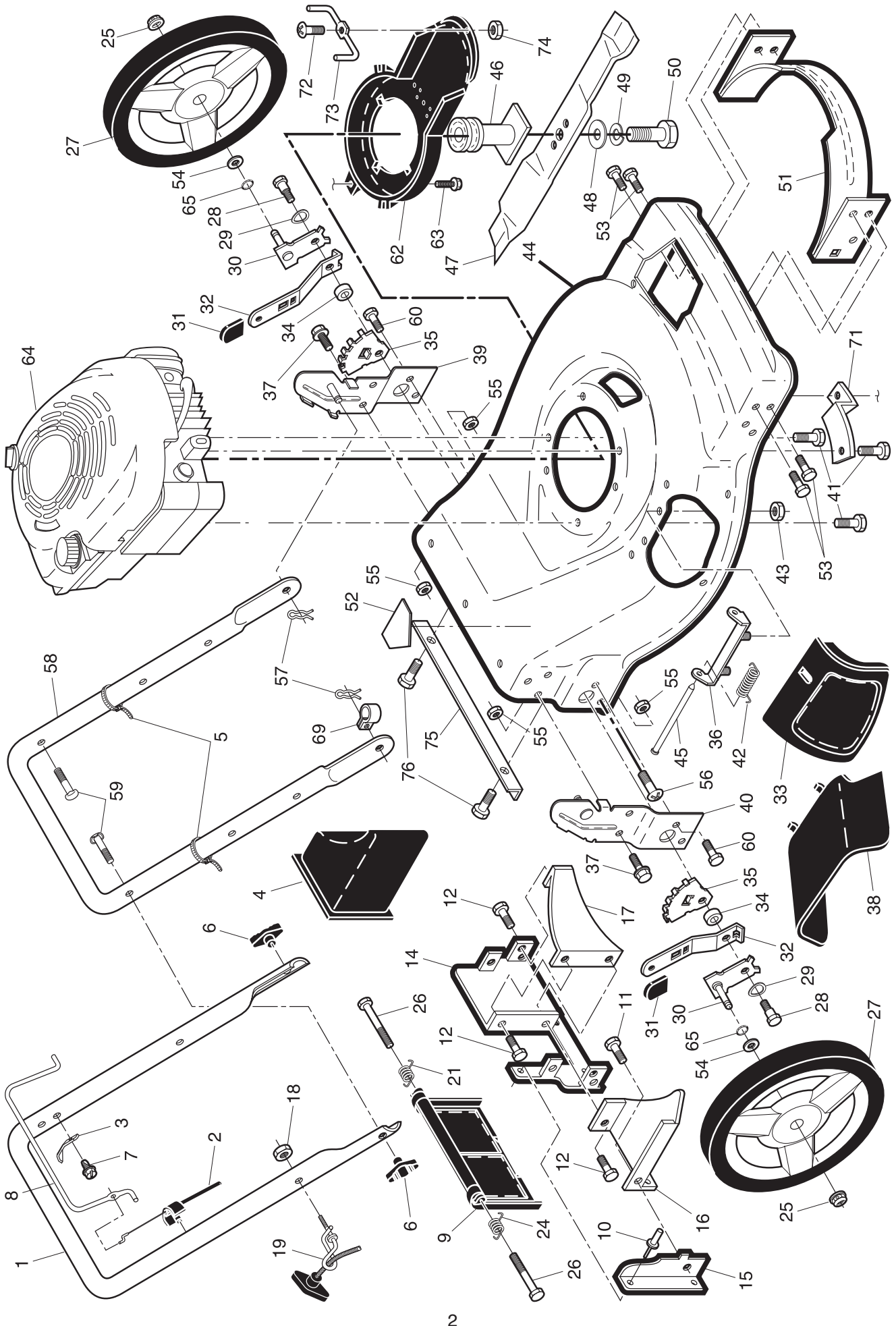
**ILLUSTRATED PARTS LIST**

**MODEL NUMBER M6556D**

**PRODUCT NUMBER 961 41 01-54**

**MFG. ID. NUMBER 96141015400**

ROTARY LAWN MOWER -- MODEL NUMBER M6556D (96141015400) - PRODUCT NUMBER 961 41 01-54



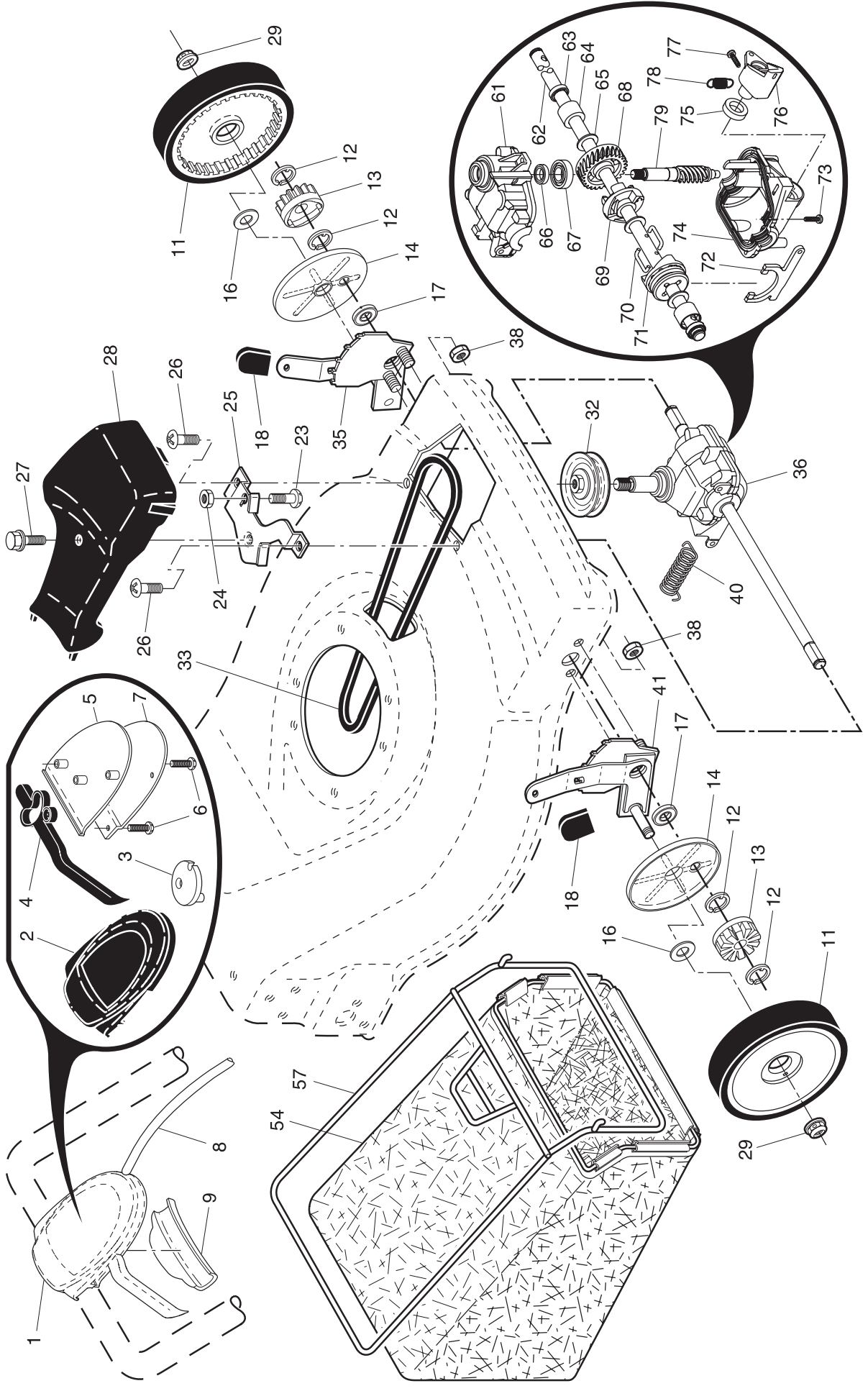
**ROTARY LAWN MOWER - - MODEL NUMBER M6556D (96141015400) - PRODUCT NUMBER 961 41 01-54**

| KEY NO. | PART NO.     | DESCRIPTION                               | KEY NO. | PART NO.     | DESCRIPTION   |
|---------|--------------|---|---------|--------------|---|
| 1       | 532 40 30-71 | Upper Handle                              | 41      | 532 15 04-06 | Bolt, Engine  |
| 2       | 532 18 35-67 | Engine Zone Control Cable                 | 42      | 532 19 30-00 | Spring, Torsion   |
| 3       | 532 12 51-62 | Bracket, Upstop                           | 43      | 873 80 04-00 | Nut, Hex, Nylock  |
| 4       | 532 16 66-49 | Mulcher Plug                              | 44      | 532 40 31-51 | Kit, Lawn Mower Housing<br>(Includes Key Numbers 14, 15 and 51)                       |
| 5       | 532 06 64-26 | Wire Tie                                  |         |              |   |
| 6       | 532 19 19-38 | Handle Knob                               | 45      | 532 17 56-50 | Rod, Hinge  |
| 7       | 532 75 06-34 | Screw                                     | 46      | 532 19 40-37 | Blade Adapter / Pulley  |
| 8       | 532 40 29-32 | Control Bar                               | 47      | 532 19 93-79 | Blade, 22"  |
| 9       | 532 40 84-92 | Rear Door Assembly                        | 48      | 532 85 10-74 | Washer, Hardened  |
| 10      | 532 12 84-15 | Pop Rivet                                 | 49      | 532 85 02-63 | Washer, Helical   |
| 11      | 532 15 00-50 | Screw, Self-Tapping #10-24 x 5/8          | 50      | 532 85 10-84 | Screw, Machine, Hex Head 3/8  |
| 12      | 532 05 45-83 | Screw, Hex Hex Head, Sems 1/4-20 x 1/2    | 51      | 532 17 04-91 | Front Baffle  |
| 14      | 532 19 84-65 | Back Plate                                | 52      | 532 18 21-66 | Danger Decal  |
| 15      | 532 41 13-34 | Side Baffle                               | 53      | 817 60 04-06 | Screw   |
| 16      | 532 17 71-33 | Discharge Baffle                          | 54      | 532 08 83-48 | Washer  |
| 17      | 532 14 89-41 | Rear Baffle                               | 55      | 532 75 15-92 | Locknut, Hex 3/8-16   |
| 18      | 532 13 20-04 | Keps Locknut 1/4-20                       | 56      | 532 08 86-52 | Screw, Hinge 1/4-20 x 1-1/4   |
| 19      | 532 19 47-88 | Rope Guide                                | 57      | 532 05 17-93 | Hairpin Cotter  |
| 21      | 532 40 54-21 | Spring, Rear Door, LH                     | 58      | 532 15 50-44 | Lower Handle  |
| 24      | 532 40 54-23 | Spring, Rear Door, RH                     | 59      | 532 19 15-74 | Handle Bolt   |
| 25      | 532 40 91-49 | Nut, Hex, Flanged                         | 60      | 874 76 06-12 | Bolt  |
| 26      | 532 18 41-93 | Bolt, Rear Door                           | 61      | 532 75 15-92 | Nut   |
| 27      | 532 40 29-35 | Wheel, Rear                               | 62      | 532 19 93-14 | Debris Shield   |
| 28      | 532 14 27-48 | Bolt, Shoulder 3/8-16 x 1                 | 63      | 532 19 23-25 | Screw, Debris Shield  |
| 29      | 532 40 16-30 | Washer, Curved, Cylindrical               | 64      | - - -        | Engine, Briggs & Stratton, Model Number 124K02 (Order parts from Engine manufacturer) |
| 30      | 532 40 65-82 | Axle Arm Assembly                         |         |              |   |
| 31      | 532 19 00-69 | Selector Knob                             | 65      | 532 19 74-80 | O-Ring  |
| 32      | 532 19 84-56 | Selector Spring                           | 69      | 532 19 79-91 | Clip, Cable   |
| 33      | 532 19 60-53 | Mulcher Door                              | 71      | 532 19 09-39 | Mounting Bracket, Debris Shield   |
| 34      | 532 40 16-29 | Spacer                                    | 72      | 532 18 22-27 | Screw   |
| 35      | 532 41 06-26 | Wheel Adjusting Bracket                   | 73      | 532 19 71-62 | Belt Keeper   |
| 36      | 532 17 57-35 | Hinge Bracket Assembly                    | 74      | 532 18 22-28 | Nut, Hex  |
| 37      | 532 15 00-78 | Screw, Sems, Thread Cutting 5/16-18 x 3/4 | 75      | 532 14 76-25 | Foot Guard  |
| 38      | 532 40 38-19 | Discharge Deflector                       | 76      | 532 14 66-94 | Screw   |
| 39      | 532 19 71-50 | Handle Bracket Assembly, LH               | - -     | 532 18 21-34 | Warning Decal (not shown)   |
| 40      | 532 19 71-51 | Handle Bracket Assembly, RH               |         |              |   |

**NOTE:** All component dimensions given in U.S. inches. 1 inch = 25.4 mm

**IMPORTANT:** Use only Original Equipment Manufacturer (O.E.M.) replacement parts. Failure to do so could be hazardous, damage your lawn mower and void your warranty.

ROTARY LAWN MOWER -- MODEL NUMBER M6556D (96141015400) - PRODUCT NUMBER 961 41 01-54



**ROTARY LAWN MOWER - - MODEL NUMBER M6556D (96141015400) - PRODUCT NUMBER 961 41 01-54**

| KEY NO. | PART NO.     | DESCRIPTION  | KEY NO. | PART NO.       | DESCRIPTION  |
|---------|--------------|--|---------|----------------|--|
| 1       | 532 19 62-71 | Drive Control Assembly (Includes Cable)                | 40      | 532 19 28-49   | Spring   |
| 2       | 532 19 57-45 | Cover, Drive Control, Top                              | 41      | 532 40 90-98   | Kit, Wheel Adjuster, RH<br>(Includes Knob and Bearing) |
| 3       | 532 19 73-53 | Pulley   | 54      | 532 40 93-25   | Grassbag Assembly                                      |
| 4       | 532 19 55-85 | Lever, Drive Control                                   | 57      | 532 40 74-54   | Frame, Grassbag  |
| 5       | 532 19 57-44 | Cover, Drive Control, Bottom                           | 61      | 532 19 68-66 * | Case, Upper  |
| 6       | 532 18 16-98 | Screw, Torx Head #8 x 5/8                              | 62      | 532 19 70-57   | Shaft, Output  |
| 7       | 532 40 07-23 | Mounting Bracket, Drive Control                        | 63      | 532 18 35-08   | Shaft, Output Shaft                                    |
| 8       | 532 19 71-95 | Cable, Drive Control                                   | 64      | 532 18 35-11   | Bushing  |
| 9       | 532 18 49-87 | Cap, Drive Control, Bottom                             | 65      | 532 18 35-09   | Washer   |
| 10      | 532 41 01-19 | Decal, Drive Control                                   | 66      | 532 18 35-14   | Seal, Worm Shaft                                       |
| 11      | 532 40 29-36 | Wheel & Tire Assembly                                  | 67      | 532 18 35-06   | Bearing, Ball  |
| 12      | 812 00 00-58 | E-Ring   | 68      | 532 18 34-99   | Gear, 27 Teeth   |
| 13      | 532 40 38-49 | Gear, Pinion   | 69      | 532 19 68-84   | Fixed Dog Clutch                                       |
| 14      | 532 18 94-03 | Dust Cover   | 70      | 532 18 35-05   | Wireform   |
| 15      | 532 19 10-17 | Drive Pawl   | 71      | 532 19 68-83   | Movable Dog Clutch                                     |
| 16      | 532 06 77-25 | Washer, Flat 3/8                                       | 72      | 532 19 68-82   | Fork   |
| 17      | 532 19 10-39 | Bearing, Wheel Adjuster                                | 73      | 532 18 35-13   | Screw, Case  |
| 18      | 532 70 10-37 | Selector Knob  | 74      | 532 19 68-81 * | Case, Lower  |
| 23      | 532 08 86-52 | Screw  | 75      | 532 19 68-80   | Seal, Lever  |
| 24      | 532 19 17-30 | Nut, Hex   | 76      | 532 19 68-79   | Lever  |
| 25      | 532 19 73-86 | Belt Keeper  | 77      | 532 19 68-78   | Screw, Lever   |
| 26      | 532 19 23-25 | Screw, Hi-Lo Thread #12 x 5/8                          | 78      | 532 19 68-77   | Spring   |
| 27      | 532 17 52-62 | Pan Head Tapping Screw #10-24 x 2-3/4                  | 79      | 532 18 35-02   | Shaft, Worm  |
| 28      | 532 19 60-56 | Drive Cover  | --      | 532 40 99-17   | Operator's Manual Euro                                 |
| 29      | 532 40 91-48 | Locknut, Hex   | --      | 532 40 99-18   | Operator's Manual Baltic                               |
| 32      | 532 19 40-18 | Drive Pulley   | --      | 532 40 99-19   | Operator's Manual E-Bloc                               |
| 33      | 532 19 68-57 | V-Belt   | --      | 532 40 99-20   | Operator's Manual Scan                                 |
| 35      | 532 40 90-97 | Kit, Wheel Adjuster, LH<br>(Includes Knob and Bearing) |         |                |  |
| 36      | 532 19 16-36 | Gear Case Assembly, Complete                           |         |                |  |
| 38      | 873 80 04-00 | Locknut, Hex 1/4-20                                    |         |                |  |

\* Use Dow Corning #709 to reseal Gear Case Halves.

**NOTE:** All component dimensions given in U.S. inches. 1 inch = 25.4 mm

**IMPORTANT:** Use only Original Equipment Manufacturer (O.E.M.) replacement parts. Failure to do so could be hazardous, damage your lawn mower and void your warranty.